

SSM-iCON 250

Residential metering



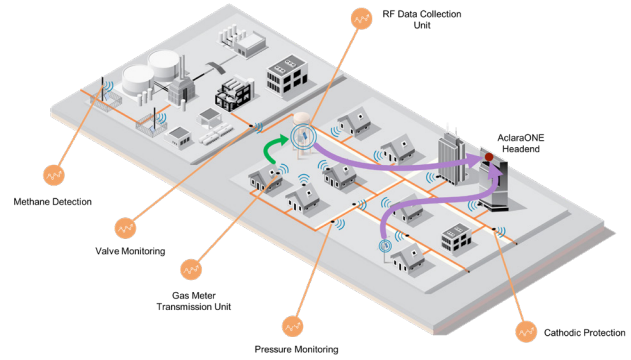
powered by **Aclara** 

**Integrated connected
solutions**



The **SSM-iCON 250** smart meter by Pietro Fiorentini incorporates the latest ultrasonic measurement technology with the flexibility of an **interchangeable communication module** featuring the **Aclara** AMI communication protocol.

Equipped with state-of-the-art monitoring sensors it can stop the gas flow for temperature (fire), pressure or seismic events as well as remotely, to enhance consumer safety and network reliability.



Design standards and approvals

The SSM-iCON 250 is designed to meet ANSI B109.6, AGA Ultrasonic Gas Meters Engineering Technical Note, OILM R137, ANSI B109.0 (draft), PS-G-06 as well as key features compliance with EN14236.

Both meter and communication module are certified independently for Class 1 Div.1



B109.6



B109.0



PS-G-06



EN14236



OIML R137



Class 1 Div.1

SSM-iCON 250 powered by Aclara competitive advantages



Emergency shut off for fire event



Emergency shut off for earthquake



Commercial shut off for tampering and remote close



Service regulator performance monitor



Simple HMI with LCD display. Single button operation



Serving 1000+ utilities – 40 of the largest in 24 countries



Simple, reliable, and scalable with the lowest cost of ownership



Proven 99.5% read success rates



Class 1 Div1 Haz-loc certification for both meter and communication module



Emergency shut off for over-pressure event



Emergency shut off for Overflow and/or Overload



Gas service pressure and temperature monitoring



Non-proprietary open protocol (DLMS)



Biomethane (RNG) compatible and 20% Hydrogen blending compatible.



20 years of RF expertise at electric, gas, and water utilities



450MHz licensed, redundant, point-to-multipoint design

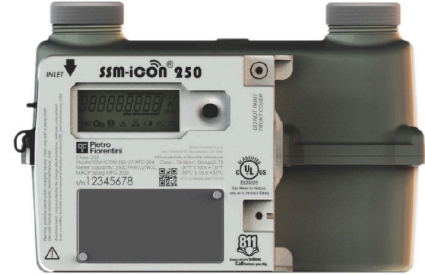


Guaranteed up to 20 years battery life for both meter and communication module

SSM-iCON 250

Suitable for use with natural gas, biomethane and hydrogen blends (up to 20%), this smart meter is used for **residential applications** on low and medium pressure gas distribution networks.

An optically isolated weatherproof connection provides a non wired, full duplex connectivity between the meter and the Communication module.



Features

Features	Values
Capacity	7 m ³ /h at 0.125 kPa differential pressure 250 cfh at 1/2" w.c. differential pressure
Maximum Operating Pressure*	up to 34.5 kPa up to 5 psig
Ambient temperature*	from -35°C to 55°C from -30°F to 130°F
Ingress protection	Compliant with IP67 and NEMA 4X
Communication interfaces	Optically isolated connection to remote communication module and local BLE
Gas volume compensation	Temperature compensated (TC) and non temperature compensated (NTC)
Connections	10LT, 20LT, Sprague (other on request)
Dimensions	6" HUB distance: 9" x 6" x 5" footprint

Table 1 SSM-iCON 250 features

Materials

Part	Material
Body	Die cast aluminum ANSI/AA 384.0 with epoxy finish for the meter case
Electronic enclosure	Plastic polycarbonate suitable for indoor, outdoor, or pit/vault installation

Table 2 SSM-iCON 250 materials

(*) NOTE: The features indicated above refer to the standard models. Different features can be provided according to specific needs.

Aclara SSM-COM

Designed to seamlessly integrate into the SSM-iCon 250 smart meter to provide a compact, clean appearance. The **Aclara SSM-COM Module** allows for replacement without returning the meter to the factory while providing communication both to and from the meter and Aclara's reliable, low latency and licensed network.



Features

Features	Values
Ambient temperature	from -35°C to 55°C from -30°F to 130°F
Ingress protection	Compliant with IP67 and NEMA 4X
Communication Network	Licensed
Frequency	RF 450-470 MHz
Interface to SSM-iCOM 250 gas meter	Optical interface using DLMS/COSEM standard protocol
Encryption	Meter to Comm module: symmetric key AES 128 Comm module to Head End system: AES 256

Table 3 Aclara SSM-COM features

Materials

Part	Material
Electronic enclosure	Plastic polycarbonate suitable for indoor, outdoor, or pit/vault installation

Table 4 Aclara SSM-COM materials

NOTE: The features indicated above refer to the standard models. Different features can be provided according to specific needs.